

# Sunday

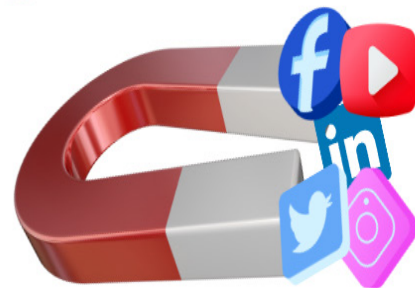
Eastern Wharf	Liberty & Jefferson	JMR Transit Center	Dismas Charities	Gwinnett & Stiles	Audubon & Cloverdale	Enmarket Arena	Liberty & Jefferson	JMR Transit Center	Eastern Wharf
8:30	8:40	8:42	8:52	9:03	9:08	9:13		9:22	9:29
9:30	9:40	9:42	9:52	10:03	10:08	10:13		10:22	10:29
10:15	10:25						10:30	10:35	10:42
10:30	10:40	10:42	10:52	11:03	11:08	11:13		11:22	11:29
10:45	10:55						11:00	11:05	11:12
11:15	11:25						11:30	11:35	11:42
11:30	11:40	11:42	11:52	12:03	12:08	12:13		12:22	12:29
11:45	11:55						12:00	12:05	12:12
12:15	12:25						12:30	12:35	12:42
12:30	12:40	12:42	12:52	13:03	13:08	13:13		13:22	13:29
12:45	12:55						13:00	13:05	13:12
13:15	13:25						13:30	13:35	13:42
13:30	13:40	13:42	13:52	14:03	14:08	14:13		14:22	14:29
13:45	13:55						14:00	14:05	14:12
14:15	14:25						14:30	14:35	14:42
14:30	14:40	14:42	14:52	15:03	15:08	15:13		15:22	15:29
14:45	14:55						15:00	15:05	15:12
15:15	15:25						15:30	15:35	15:42
15:30	15:40	15:42	15:52	16:03	16:08	16:13		16:22	16:29
15:45	15:55						16:00	16:05	16:12
16:15	16:25						16:30	16:35	16:42
16:30	16:40	16:42	16:52	17:03	17:08	17:13		17:22	17:29
16:45	16:55						17:00	17:05	17:12
17:15	17:25						17:30	17:35	17:42
17:30	17:40	17:42	17:52	18:03	18:06				
17:45	17:55								

## Stay Connected!

**1** TEXT "RIDE CAT" to 41411 to receive major service alerts, schedule adjustments and CAT News!



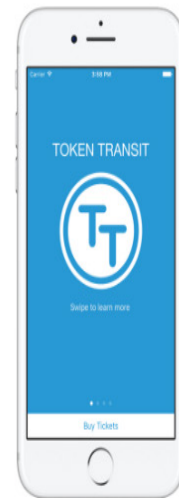
**2** Follow Chatham Area Transit on social media!



**3** Download the CATTracker!



**4** Get your bus passes instantly with Token Transit



For more ways to connect visit: [linktr.ee/catchacat](http://linktr.ee/catchacat)

## Bienvenidos al CAT

### ADA

CAT hace adaptaciones razonables para que las personas con discapacidades utilicen los servicios de tránsito. Las solicitudes deben realizarse completando y enviando un formulario de Solicitud de Adaptación Razonable. Para obtener más información, visite [catchacat.org](http://catchacat.org).

### Title VI

CAT presta sus servicios de tránsito sin tener en cuenta la raza, el color, la religión, el sexo, la orientación sexual, el origen nacional, el estado civil, la edad o la discapacidad, de acuerdo con el Título VI de la Ley de Derechos Civiles de 1964 y sus enmiendas. Para más información, visite [www.catchacat.org](http://www.catchacat.org).

### SERVICIO EN DIAS FERIADOS

Por favor consulte los horarios de servicio reducido para los días MLK, Día Conmemorativo, 4 de Julio, Día del trabajador, Noche Buena y Víspera de año nuevo. CAT no ofrecerá ningún servicio durante los días de Acción de Gracias, Navidad y Año Nuevo.

### INFORMACIÓN GENERAL

Por su propia seguridad, está prohibido comer, beber o fumar a bordo del autobús. Es obligatorio llevar camisa y zapatos. Le rogamos que permita a las personas mayores y a los pasajeros con discapacidades utilizar la zona de "asientos prioritarios" de la parte delantera. Le rogamos que respete a sus compañeros de viaje utilizando auriculares y manteniendo las conversaciones en voz baja y con educación. Los bebés deben ser retirados de los cochecitos y plegados antes de subir al autobús. Los autobuses CAT están equipados con portabicicletas. Visite [www.catchacat.org](http://www.catchacat.org) para obtener más información o llame al 912-233-5767.



## Welcome to CAT

### ADA

CAT makes reasonable accommodations for people with disabilities to use transit services. Requests should be made by filling out and submitting a Reasonable Accommodation Request form. For more information visit [catchacat.org](http://catchacat.org).

### Title VI

CAT operates its transit services without regard to race, color, religion, sex, sexual orientation, national origin, marital status, age or disability in accordance with Title VI of the Civil Rights Act of 1964 and its amendments. For more information ho to [www.catchacat.org](http://www.catchacat.org).

### HOLIDAY SERVICE

Please see reduced service hours for Martin Luther King Jr. Day, Memorial Day, July 4, Christmas Eve and New Year's Eve. CAT will not offer service during Thanksgiving, Christmas and New Year's Day.

### GENERAL INFORMATION

For your own safety, eating, drinking, or smoking onboard the bus is prohibited. Shirt and shoes must be worn. We ask that you allow seniors and passengers with disabilities to use the 'Priority Seating' area in the front. Please respect your fellow riders by using earphones and by keeping conversations quiet and polite. Infants must be removed from strollers, and strollers folded, before boarding. CAT buses are equipped with bicycle racks. Please visit [www.catchacat.org](http://www.catchacat.org) for more information or call 912-233-5767.



# 7D - C

Cloverdale and Carver Village

### SERVICE BETWEEN

- ▶ Eastern Wharf
- ▶ Downtown Savannah
- ▶ Joe Murray Rivers, Jr. Intermodal Transit Center
- ▶ Enmarket Arena
- ▶ Historic Carver Village
- ▶ Cloverdale

**CAT** | Always on the move!

912-233-5767  
[catchacat.org](http://catchacat.org)  
 Effective: July 17, 2023



CHATHAM AREA TRANSIT

### SERVICIO AL CLIENTE

Ride Line: 912-233-5767 [www.catchacat.org](http://www.catchacat.org)

Oficinas CAT  
 PO Box 9118  
 Savannah, GA 31412

GRACIAS POR VIAJAR CON CAT!

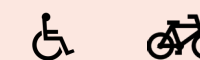


### CUSTOMER SERVICE

Ride Line: 912-233-5767 [www.catchacat.org](http://www.catchacat.org)

Chatham Area Transit  
 PO Box 9118  
 Savannah, GA 31412

THANK YOU FOR CATCHING A CAT!

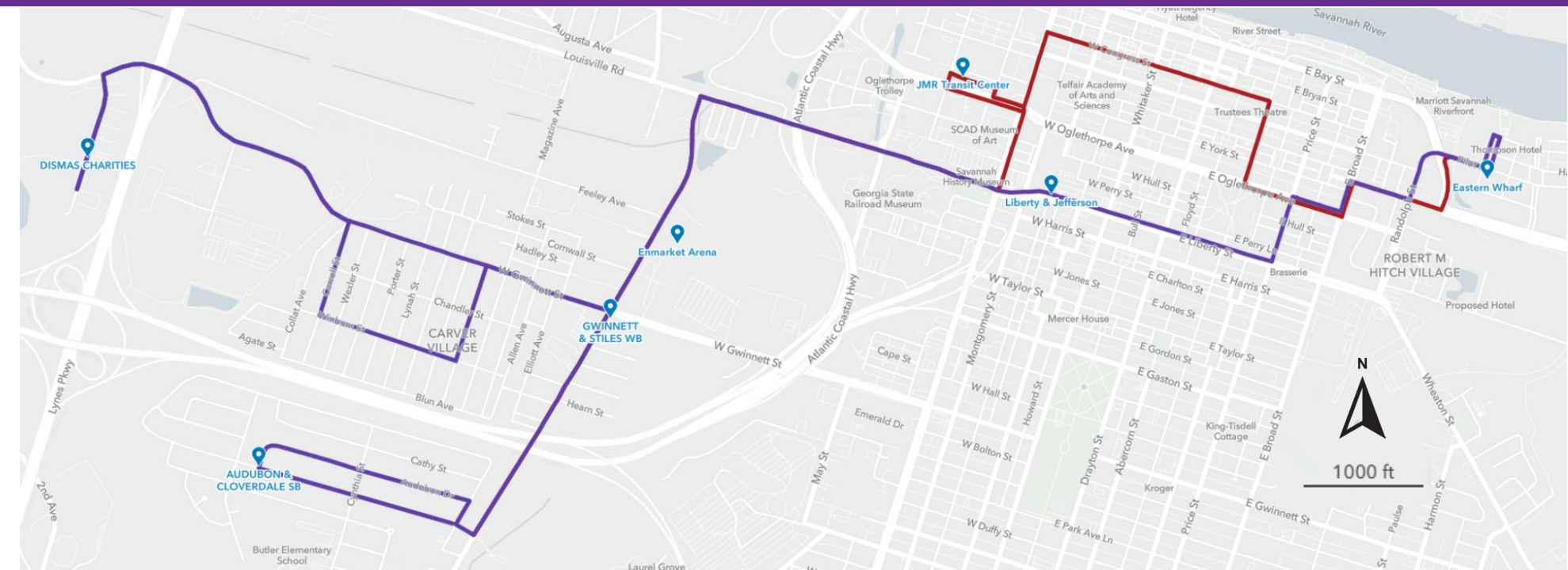


Monday-Friday

Eastern Wharf	Liberty & Jefferson	JMR Transit Center	Dismas Charities	Gwinnett & Stiles	Audubon & Cloverdale	Enmarket Arena	Liberty & Jefferson	JMR Transit Center	Eastern Wharf
		6:40	6:50	7:01	7:06	7:11		7:20	7:26
7:15	7:25						7:27	7:32	7:38
7:30	7:40	7:42	7:52	8:03	8:06	8:11		8:20	8:26
7:45	7:55						7:57	8:02	8:08
8:15	8:25						8:27	8:32	8:38
8:30	8:40	8:42	8:52	9:03	9:06	9:11		9:20	9:26
8:45	8:55						8:57	9:02	9:08
9:15	9:25						9:27	9:32	9:38
9:30	9:40	9:42	9:52	10:03	10:06	10:11		10:20	10:26
9:45	9:55						9:57	10:02	10:08
10:15	10:25						10:27	10:32	10:38
10:30	10:40	10:42	10:52	11:03	11:06	11:11		11:20	11:26
10:45	10:55						10:57	11:02	11:08
11:15	11:25						11:27	11:32	11:38
11:30	11:40	11:42	11:52	12:03	12:06	12:11		12:20	12:26
11:45	11:55						11:57	12:02	12:08
12:15	12:25						12:27	12:32	12:38
12:30	12:40	12:42	12:52	13:03	13:06	13:11		13:20	13:26
12:45	12:55						12:57	13:02	13:08
13:15	13:25						13:27	13:32	13:38
13:30	13:40	13:42	13:52	14:03	14:06	14:11		14:20	14:26
13:45	13:55						13:57	14:02	14:08
14:15	14:25						14:27	14:32	14:38
14:30	14:40	14:42	14:52	15:03	15:06	15:11		15:20	15:26
14:45	14:55						14:57	15:02	15:08
15:15	15:25						15:27	15:32	15:38
15:30	15:40	15:42	15:52	16:03	16:06	16:11		16:20	16:26
15:45	15:55						15:57	16:02	16:08
16:15	16:25						16:27	16:32	16:38
16:30	16:40	16:42	16:52	17:03	17:06	17:11		17:20	17:26
16:45	16:55						16:57	17:02	17:08
17:15	17:25						17:27	17:32	17:38
17:30	17:40	17:42	17:52	18:03	18:06	18:11		18:20	18:26
17:45	17:55						17:57	18:02	18:08
18:15	18:25						18:27	18:32	18:38
18:30	18:40	18:42	18:52	19:03	19:10	19:15		19:24	
18:45	18:55						18:57	19:02	19:08
		19:25	19:35	19:46	19:49				

Saturday/Holiday

Eastern Wharf	Liberty & Jefferson	JMR Transit Center	Dismas Charities	Gwinnett & Stiles	Audubon & Cloverdale	Enmarket Arena	Liberty & Jefferson	JMR Transit Center	Eastern Wharf
		6:40	6:50	7:01	7:06	7:11		7:20	7:26
7:15	7:25						7:27	7:32	7:38
7:30	7:40	7:42	7:52	8:03	8:06	8:11		8:20	8:26
7:45	7:55						7:57	8:02	8:08
8:15	8:25						8:27	8:32	8:38
8:30	8:40	8:42	8:52	9:03	9:06	9:11		9:20	9:26
8:45	8:55						8:57	9:02	9:08
9:15	9:25						9:27	9:32	9:38
9:30	9:40	9:42	9:52	10:03	10:06	10:11		10:20	10:26
9:45	9:55						9:57	10:02	10:08
10:15	10:25						10:27	10:32	10:38
10:30	10:40	10:42	10:52	11:03	11:06	11:11		11:20	11:26
10:45	10:55						10:57	11:02	11:08
11:15	11:25						11:27	11:32	11:38
11:30	11:40	11:42	11:52	12:03	12:06	12:11		12:20	12:26
11:45	11:55						11:57	12:02	12:08
12:15	12:25						12:27	12:32	12:38
12:30	12:40	12:42	12:52	13:03	13:06	13:11		13:20	13:26
12:45	12:55						12:57	13:02	13:08
13:15	13:25						13:27	13:32	13:38
13:30	13:40	13:42	13:52	14:03	14:06	14:11		14:20	14:26
13:45	13:55						13:57	14:02	14:08
14:15	14:25						14:27	14:32	14:38
14:30	14:40	14:42	14:52	15:03	15:06	15:11		15:20	15:26
14:45	14:55						14:57	15:02	15:08
15:15	15:25						15:27	15:32	15:38
15:30	15:40	15:42	15:52	16:03	16:06	16:11		16:20	16:26
15:45	15:55						15:57	16:02	16:08
16:15	16:25						16:27	16:32	16:38
16:30	16:40	16:42	16:52	17:03	17:06	17:11		17:20	17:26
16:45	16:55						16:57	17:02	17:08
17:15	17:25						17:27	17:32	17:38
17:30	17:40	17:42	17:52	18:03	18:06	18:11		18:20	18:26
17:45	17:55						17:57	18:02	18:08
18:15	18:25						18:27	18:32	18:38
18:30	18:40	18:42	18:52	19:03	19:10	19:15		19:24	
18:45	18:55						18:57	19:02	19:08
		19:25	19:35	19:46	19:49				



**WE ARE HIRING!**

**Full-Time & Part-Time**

**CATCH A CAREER WITH CAT**

- Benefits
- Sign On Bonuses
- On-Site Interviews

**\*CDL required for Fixed Route Operators**



**CAT Opportunities**

**\*Bring Your Resume' and MVR (3 Years) for operator positions**

**FIXED ROUTE STARTING PAY: \$20/HOUR**



**PARATRANSIT STARTING PAY: \$15/HOUR**